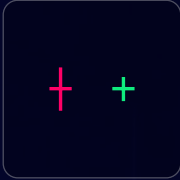
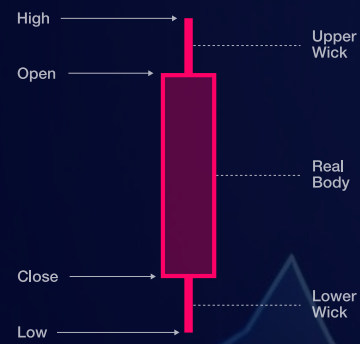
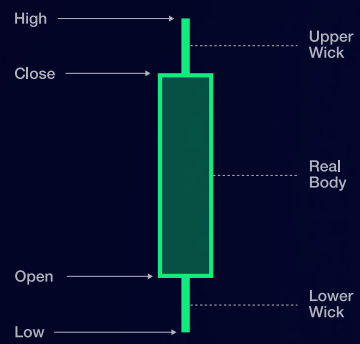


# Candlestick Patterns Cheat Sheet

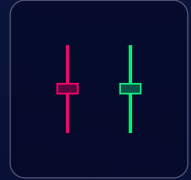
## Candlestick Anatomy



Doji (Neutral)



Long-Legged Doji (Neutral)

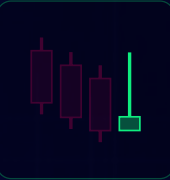


Spinning Top (Neutral)

## Single Candlestick Patterns



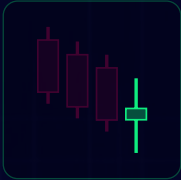
Hammer



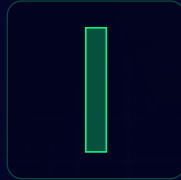
Inverted Hammer



Dragonfly Doji



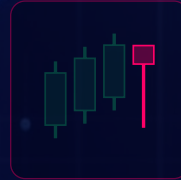
Bullish Spinning Top



Bullish Marubozu



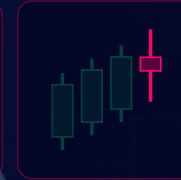
Shooting Star



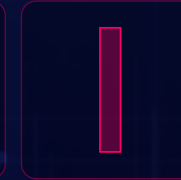
Hanging Man



Gravestone Doji

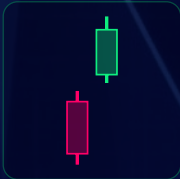


Bearish Spinning Top



Bearish Marubozu

## Double Candlestick Patterns



Bullish Kicker



Bullish Engulfing



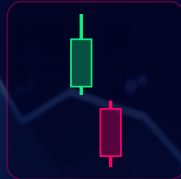
Bullish Harami



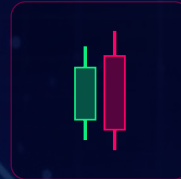
Piercing Line



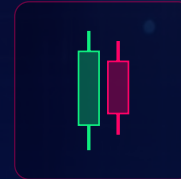
Tweezer Bottom



Bearish Kicker



Bearish Engulfing



Bearish Harami



Dark Cloud Cover



Tweezer Top

## Triple Candlestick Patterns



Morning Star



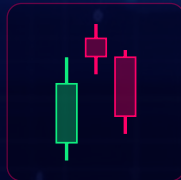
Bullish Abandoned Baby



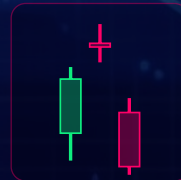
Three White Soldiers



Morning Doji Star



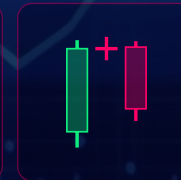
Evening Star



Bearish Abandoned Baby

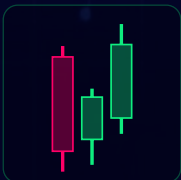


Three Black Crows



Evening Doji Star

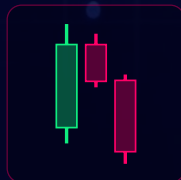
## Confirmation Patterns



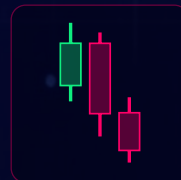
Three Inside Up



Three Outside Up



Three Inside Down



Three Outside Down

**Bullish Patterns**

**Bearish Patterns**